

# EAZA

1  
**WHOLE  
BODY MRI**

## EAZA 1 **WHOLE BODY MRI**

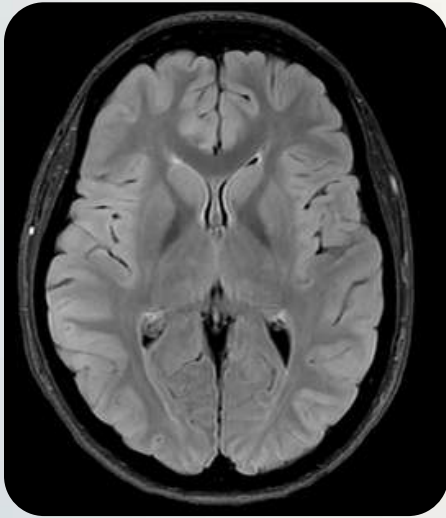
EAZA Whole Body Screening is an advanced, comprehensive whole-body health evaluation using 3 Tesla MRI, low radiation HRCT, and Deep Learning AI technologies.

It screens almost all major internal organs and systems of the body in a single session. This package is designed to identify early signs of diseases, tumors, inflammation, structural abnormalities, and degenerative changes.

Eaza Smart Whole Body Scan includes, the Brain, sinuses, neck structures, lungs (HRCT), liver, kidneys, pancreas, adrenal glands, prostate/uterus & ovaries, bony pelvis, whole spine, major bones and muscles (excluding shoulder, elbow, wrist, and upper extremity joints).

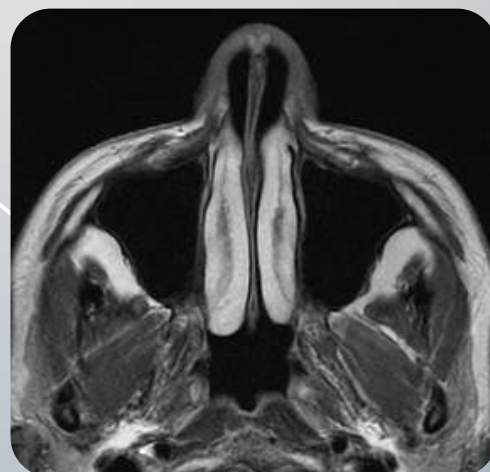
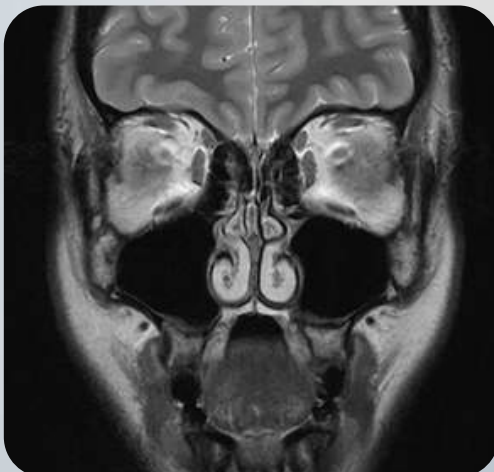
## MRI BRAIN SCREENING

- Evaluates Brain structure, ventricles, white and gray matter.
- Detects early tumors, stroke, cysts, aneurysms, demyelinating diseases, age-related changes.
- Helps in early diagnosis of neurological issues before symptoms appear.



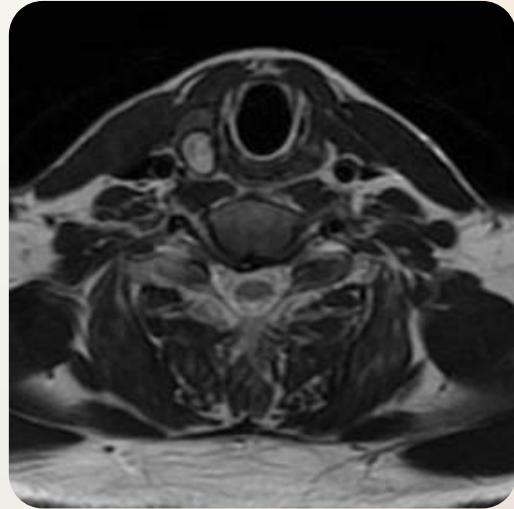
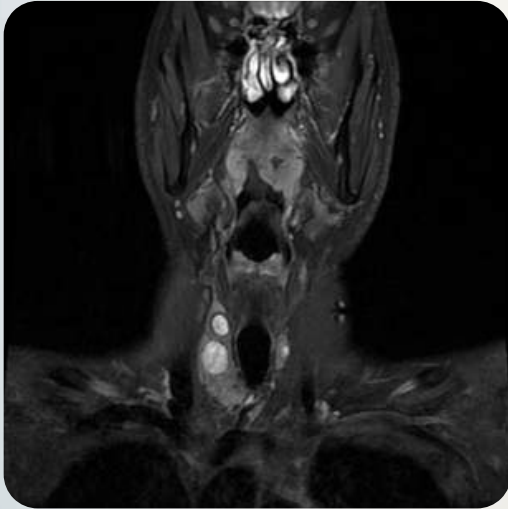
## MRI SINUSES SCREENING

- Screens paranasal sinuses for blockages, infections, chronic sinusitis.
- Helps patients with frequent headache or nasal congestion.



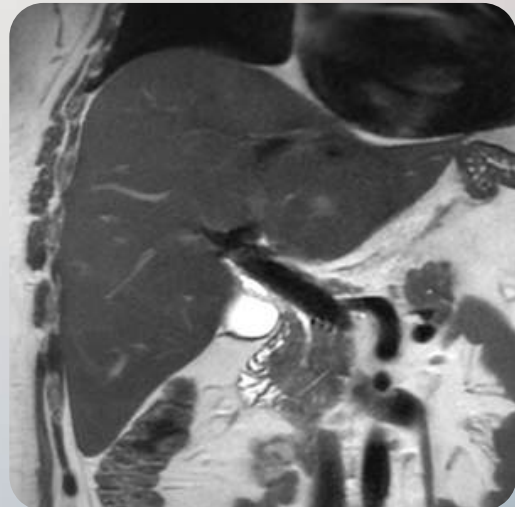
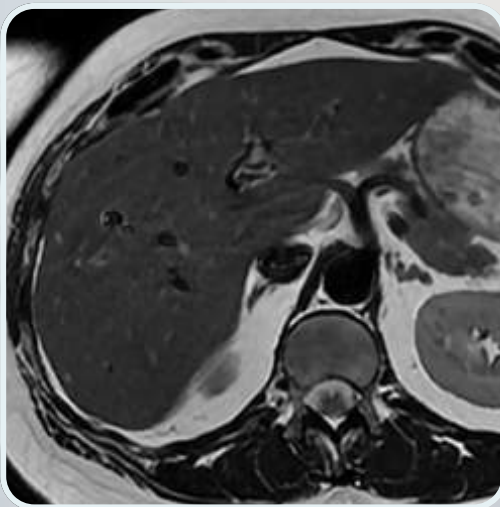
## MRI NECK SCREENING

- Covers thyroid gland, lymph nodes, soft tissues.
- Detects nodules, enlarged nodes, cysts, inflammation.



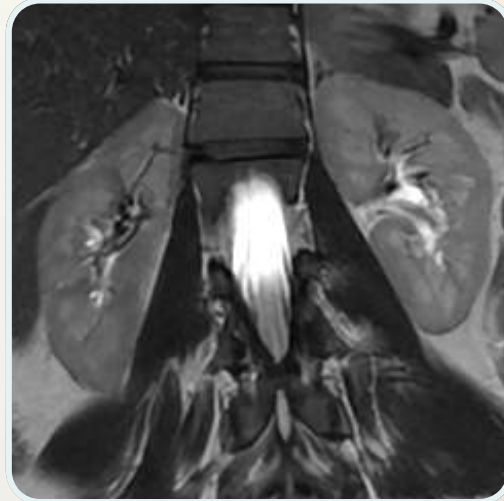
## MRI LIVER SCREENING

- Screens for fatty liver, cysts, tumors, structural abnormalities



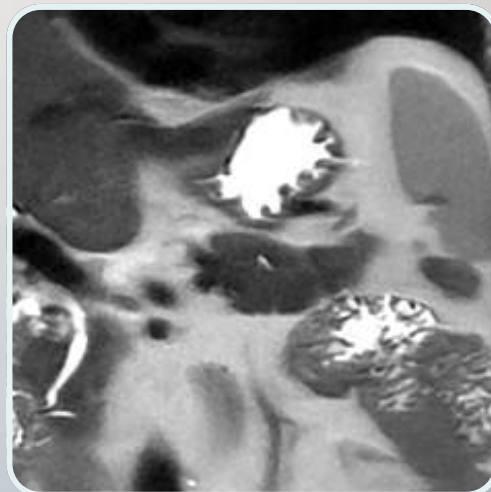
## MRI KIDNEY SCREENING

- Checks kidney size, shape, cysts, stones, tumors, hydronephrosis.



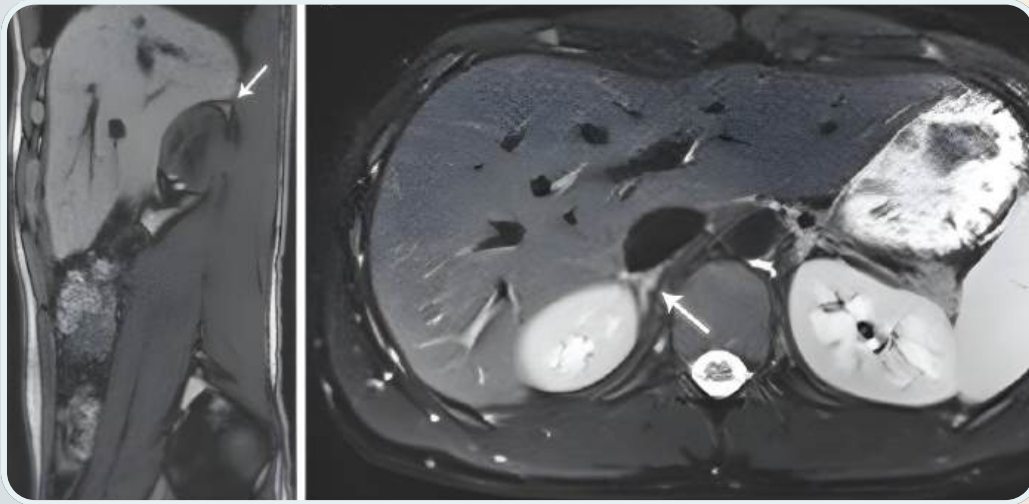
## MRI PANCREAS SCREENING

- Evaluates pancreas for inflammation, cysts, masses, and structural disorders.



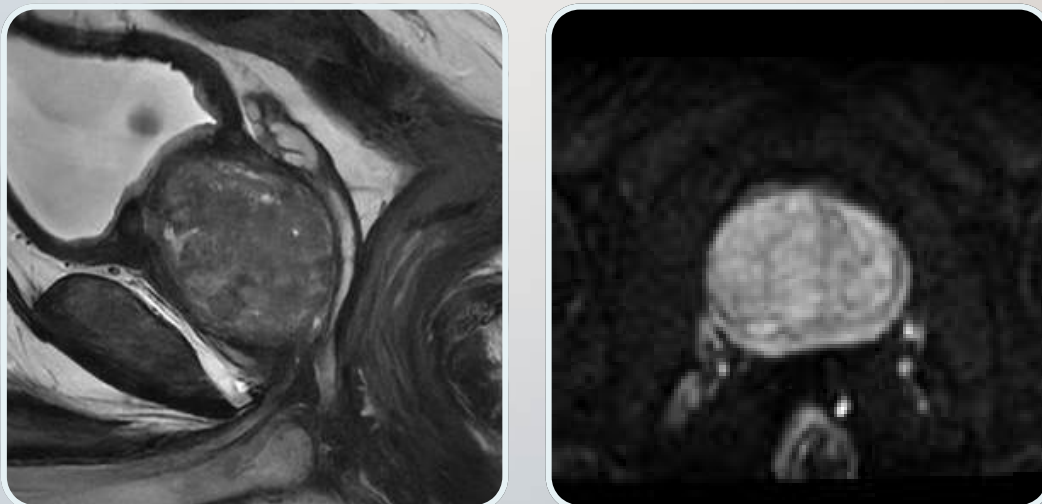
## MRI ADRENAL GLANDS SCREENING

- Screens for incidental nodules, benign adenomas, pheochromocytoma, metastasis, and hormone-secreting tumors without radiation.



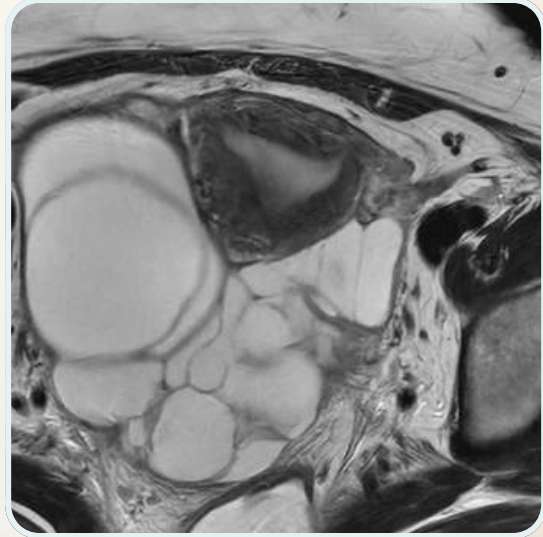
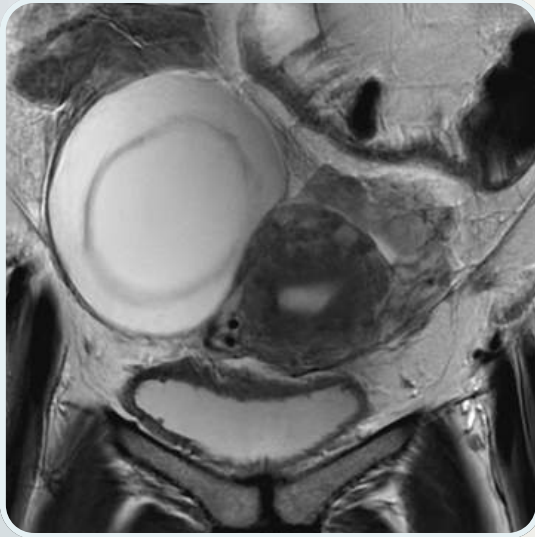
## MRI PROSTATE SCREENING (MALE)

- Screens for enlargement, lesions, and early prostate cancer indicators.



## MRI UTERUS AND OVARIES SCREENING (FEMALE)

- Evaluates uterus, fibroids, ovarian cysts, and masses.



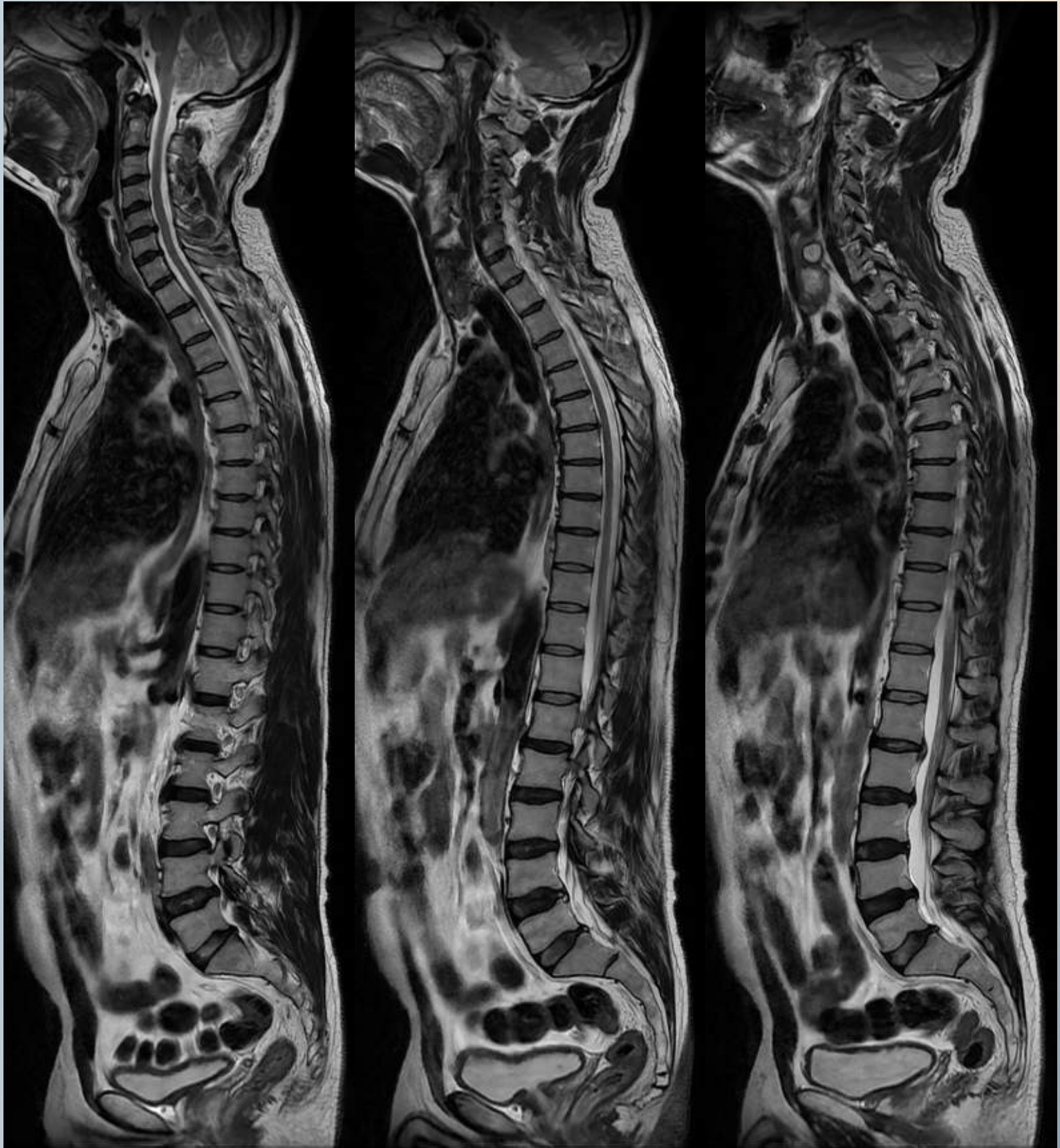
## MRI BONY PELVIS

- Assesses pelvic bones for fractures, tumors, degenerative changes.



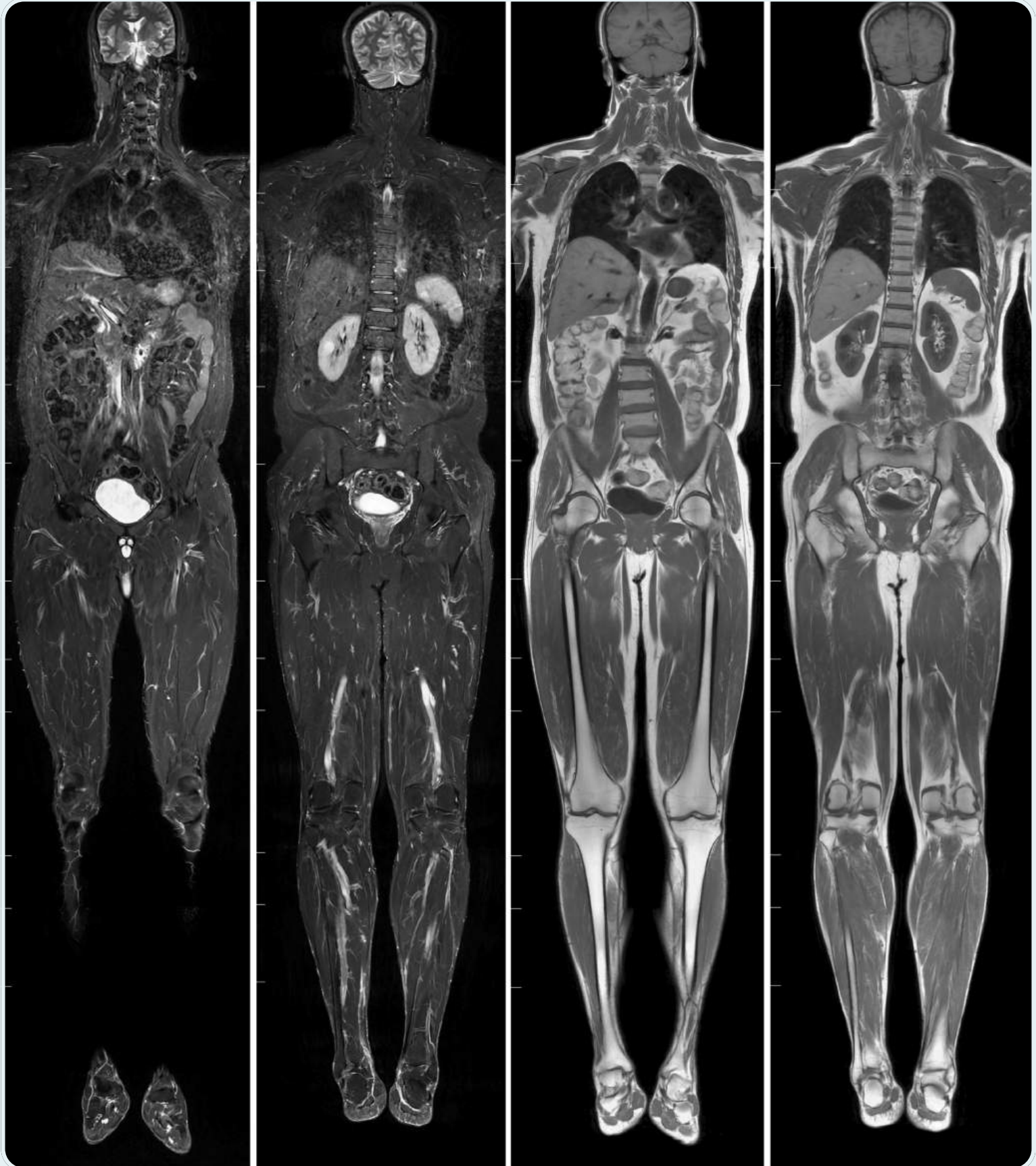
## MRI WHOLE SPINE

- Covers cervical, thoracic, and lumbar spine.
- Detects disc bulges, nerve compression, degeneration, canal narrowing.



## MRI BONES AND MUSCLES

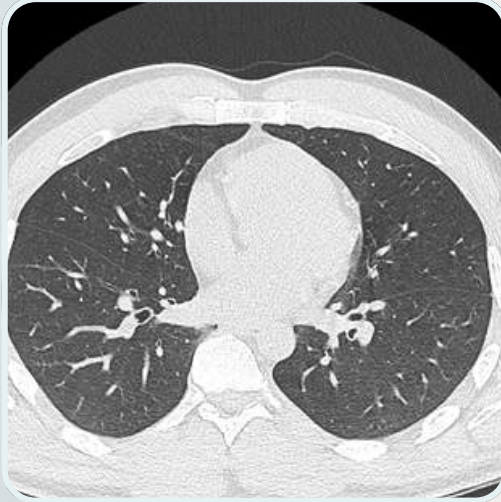
- Screens major skeletal structures and muscle groups (excluding shoulders, elbows, wrists).
- Detects bone lesions, marrow issues, inflammation, and soft-tissue



**WHOLE BODY MRI IMAGES**

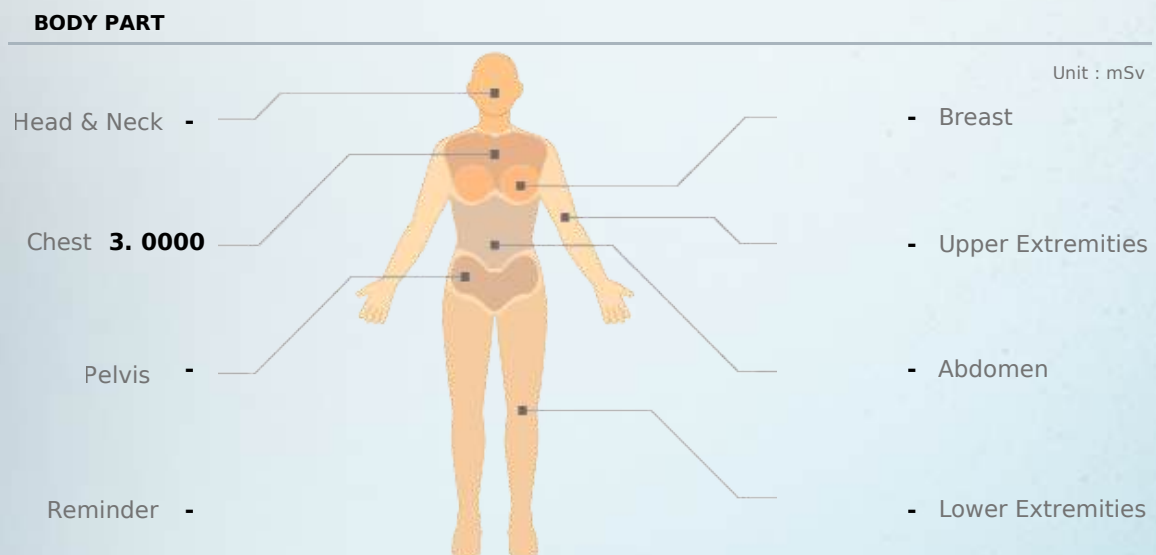
## HRCT LUNGS

- High-resolution CT images for lung structure, airway, and details.
- Detects infections, fibrosis, nodules, and early lung cancer.



## ULTRA-LOW RADIATION EXPOSURE

Zero Radiation Worries: **DoseM** Delivers Ultra-Low Exposure Under Strict Safety Standards.



# BENEFITS WHOLE BODY MRI

## EARLY DETECTION ADVANTAGE

Detect diseases at an early stage , even before symptoms appear.

## COMPREHENSIVE COVERAGE

Covers all major organs in one session.

## SAFE IMAGING METHOD

Non-invasive, radiation-free MRI for most organs.

## PERSONALIZED RISK SUPPORT

Helps individuals with family history of cancer or lifestyle diseases.

## PEACE OF MIND

Provides peace of mind with a complete health overview.

## PREVENTIVE WELLNESS

Supports preventive medicine for long-term wellness.

BOOK YOUR **EAZA WHOLE BODY SCAN NOW**